

Wyoming Certified Land Corner Recordation Certificate

This form is to be completed in accordance with W.S. 36-11-101, printed in black ink or typed, and shall be for one individual corner.

Describe below, or show in sketch attached to this form, the corner evidence found. Include condition and type of monument, accessories and ties. Describe any maintenance or rehabilitation performed. In the circle to the right, show monument inscription. If monument is determined lost or obliterated, restate the GLO or BLM original field note record; describe or show the procedure used to reestablish the corner and all data as above for a found monument.

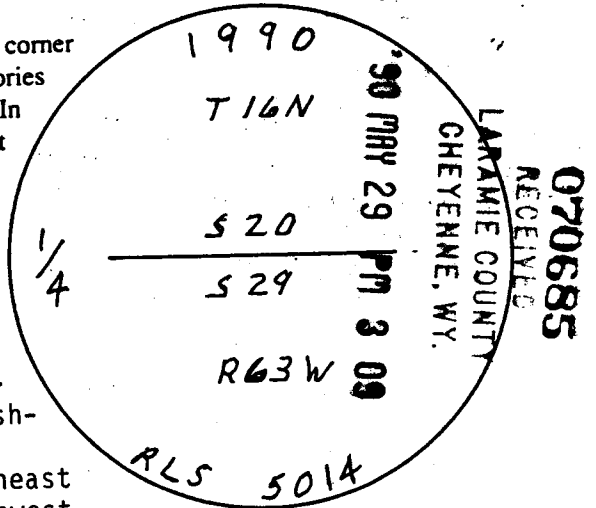
Field Date 4-11-90 Office Reference _____

After extensive field search, it was determined the best evidence for the re-establishment of the corner was the straight-line proportion between the re-established southeast corner of Section 20 and the existing southwest corner of Section 20.

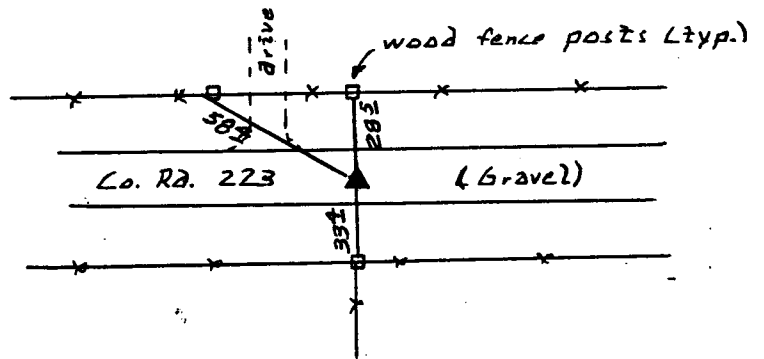
GLO notes attached.

Monument set: #5 rebar with 2" aluminum cap stamped as shown; 6" below gravel road.

References: P-K nails with 1-1/2" galvanized washers stamped "5014".



Monument Inscription



State of Wyoming
Office of County Clerk
County of Laramie

This Certified Land Corner Recordation Certificate was filed for record on the _____ day of _____, 19 ____, in Book No. T _____, R _____, on Alpha-Numeric coordinates R-7 and was noted on the Cross Index Plat.

County Clerk

Corner Type:
 Aliquot Corner Other
Corner Name Quarter

Section(s) 20 Meridian 6th
Township 16N Range 63W Page _____

Sheet 1 of 3

1503

Directions for using the Cross Index Plat

Section, quarter and sixteenth corners will be marked with a dot at the corner location. The alpha-numeric coordinate number is then determined for the intersection of the two lines. A corner that applies to two or more townships shall be filed under all that apply by the use of photo copies.

Closing corners will be indexed under the township in which they control ownership. For 1/64, 1/256, 1/1024 and non-aliquot corners lying between grid designations, mark the appropriate grid area with a dot and use the index code to the north and west (local systems may be used if the method is approved by the County Surveyor or Clerk and a written description of its use is filed in the front of each book of certificates).

Cross Index Plat

1	2	3	4	5	6	7	8	9	10	11	12	13	14	15	16	17	18	19	20	21	22	23	24	25	
A	-	-	-	-	-	-	-	-	-	-	-	-	-	-	-	-	-	-	-	-	-	-	-	-	-
B	-	-	-	-	-	-	-	-	-	-	-	-	-	-	-	-	-	-	-	-	-	-	-	-	-
C	6	-	-	-	-	-	-	-	-	-	-	-	-	-	-	-	-	-	-	-	-	-	-	-	-
D	-	-	-	-	-	-	-	-	-	-	-	-	-	-	-	-	-	-	-	-	-	-	-	-	-
E	-	-	-	-	-	-	-	-	-	-	-	-	-	-	-	-	-	-	-	-	-	-	-	-	-
F	-	-	-	-	-	-	-	-	-	-	-	-	-	-	-	-	-	-	-	-	-	-	-	-	-
G	7	-	-	-	-	-	-	-	-	-	-	-	-	-	-	-	-	-	-	-	-	-	-	-	-
H	-	-	-	-	-	-	-	-	-	-	-	-	-	-	-	-	-	-	-	-	-	-	-	-	-
J	-	-	-	-	-	-	-	-	-	-	-	-	-	-	-	-	-	-	-	-	-	-	-	-	-
K	-	-	-	-	-	-	-	-	-	-	-	-	-	-	-	-	-	-	-	-	-	-	-	-	-
L	18	-	-	-	-	-	-	-	-	-	-	-	-	-	-	-	-	-	-	-	-	-	-	-	-
M	-	-	-	-	-	-	-	-	-	-	-	-	-	-	-	-	-	-	-	-	-	-	-	-	-
N	-	-	-	-	-	-	-	-	-	-	-	-	-	-	-	-	-	-	-	-	-	-	-	-	-
O	-	-	-	-	-	-	-	-	-	-	-	-	-	-	-	-	-	-	-	-	-	-	-	-	-
P	19	-	-	-	-	-	-	-	-	-	-	-	-	-	-	-	-	-	-	-	-	-	-	-	-
Q	-	-	-	-	-	-	-	-	-	-	-	-	-	-	-	-	-	-	-	-	-	-	-	-	-
R	-	-	-	-	-	-	-	-	-	-	-	-	-	-	-	-	-	-	-	-	-	-	-	-	-
S	-	-	-	-	-	-	-	-	-	-	-	-	-	-	-	-	-	-	-	-	-	-	-	-	-
T	30	-	-	-	-	-	-	-	-	-	-	-	-	-	-	-	-	-	-	-	-	-	-	-	-
U	-	-	-	-	-	-	-	-	-	-	-	-	-	-	-	-	-	-	-	-	-	-	-	-	-
V	-	-	-	-	-	-	-	-	-	-	-	-	-	-	-	-	-	-	-	-	-	-	-	-	-
W	-	-	-	-	-	-	-	-	-	-	-	-	-	-	-	-	-	-	-	-	-	-	-	-	-
X	31	-	-	-	-	-	-	-	-	-	-	-	-	-	-	-	-	-	-	-	-	-	-	-	-
Y	-	-	-	-	-	-	-	-	-	-	-	-	-	-	-	-	-	-	-	-	-	-	-	-	-
Z	-	-	-	-	-	-	-	-	-	-	-	-	-	-	-	-	-	-	-	-	-	-	-	-	-
1	2	3	4	5	6	7	8	9	10	11	12	13	14	15	16	17	18	19	20	21	22	23	24	25	

State Plane Coordinates (optional)

Zone W WC EC E feet/meters

NAD 1927 NGVD 1929 NAD 1983 NAVD 1988

North (Y) = _____ East (X) = _____ EL = _____

Latitude _____ Longitude _____

Scale Factor _____ Geoid Height _____

Certification

I, Raymond E. Connin, Wyoming PLS-~~PLS~~ 5014 certify that I, or others under my supervision, have performed the work as described above and completed this form.

Company or Agency Hall & Walters, Inc.

Mailing Address _____

Street Address 873 North Cleveland

City, State, ZIP Loveland, CO 80537

Telephone, FAX 303-663-1177



Raymond E. Connin
Signature, Seal, and Date

28. 158

Shewship 16 North Range 63 West
Chain On a Random line
between sections 26 to 29

variation 15.35'

40.00 Del Temporary 1/4 Section corner
between N to S line 16 line

19.80 Double of corner to sections
20, 21, 28 & 29 from which
corner 2 run

89.90 S 89 40 W On a line line
between sections 20 to 29
bet of ground boundary 16 to 10 X 6

19.80 for quarter section corner
Corner to sections 19, 20, 29 & 30

Double setting base 20 rods
grass ground

~~West On a Random line
between sections 19 & 30
variation 15.35'~~

40.00

Del Temporary 1/4 Section corner
between the upper boundary of

159 37

Shewship 16 North Range 63 West
Chain the Township 14 lines north
of the corner to sections 19, 20, 24
to 25 from which corner 2 run

to 25 from which corner 2 run

38.96 S 89 25 E On a line line
between sections 19, 20, 24

19.80 bet a ground boundary 16 X 10 X 6
for quarter section corner

40.00 Corner to sections 19, 20, 29 & 30
Setting of 20 rods grass ground

~~North Between sections 19 & 20
variation 15.35'~~

40.00 bet a ground boundary 19 X 8 X 6
for quarter section corner

30.00 bet a ground boundary 19 X 10 X 5
for corner to sections 19, 20, 19 & 20

~~Double setting base 20 rods
grass ground~~

